



20 23

ANNUAL
REPORT



From the CEO



Growing Think Together's reach in order to impact more students has long been a hallmark of Think Together's history. However, the magnitude of our expansion this year is truly remarkable. The opportunity to scale our impact has never been greater, and we are committed to making the most of it.

Coming out of the pandemic, the students we serve face more obstacles than ever before. We are seeing more behavioral problems due to mental health challenges and the lack of social development during the pandemic. Academic performance across the country has dropped to levels not seen in 30 years. Our students need us now more than ever.

In the wake of this crisis, Governor Gavin Newsom and the State Legislature created the Expanded Learning Opportunity Program (ELO-P) to enable universal access to afterschool and summer programs for vulnerable students

from transitional kindergarten through Grade 6. This increased the state investment from roughly \$800 million per year to \$4.8 billion per year.

While Think Together was fortunate to have built the largest infrastructure in the state supporting expanded learning over the past 15 years, it is still no match for the task of implementing at a universal access scale.

We are in the midst of a multi-year growth cycle. In fiscal year 2023, we grew by more than 70%. Since fiscal year 2021, the organization has tripled in size. Despite this growth, many high-potential students and mission-critical programs are dependent on investments from the private sector to support innovation, the next generation of college students, and our future workforce. It takes a village.

I want to express my deepest gratitude for the dedication, passion, and unwavering commitment to our village: our school partners, policy partners, private funding partners, volunteers including our Board of Directors, and our amazing staff.

Together, we can make a greater impact than we could ever have imagined just a few years ago. Thank you for joining us on this incredible journey!

RANDY BARTH
Founder and CEO

From the Board Chair



As we close out another year, Think Together finds itself on the verge of a significant milestone: serving more than 2 million students through expanded learning and school improvement since our inception. It's a goal that embodies unshakeable dedication to closing the achievement gap and providing exceptional educational opportunities to students of all backgrounds.

Our vision encompasses a holistic approach to education, starting with early learning programs that lay the foundation for future success. From there, our K-8 STEM, arts, sports, and enrichment programs spark curiosity and creativity in young minds. And for our high school students, we are committed to preparing them for their future through college and career readiness initiatives. We wrap these student programs in a data-driven, equity-based school improvement approach with teachers and education leaders that closes the achievement gap that has persisted far too long in our society.

However, our journey isn't solely about numbers; it's about cultivating stronger partnerships with the communities we serve. It's about innovative collaborations that prioritize the success of our students, which amplify our impact and create opportunities that extend well beyond the classroom.

As we continue on this journey together, I want to express my deep appreciation for our board members, donors, school partners, and community leaders. With their steadfast support and belief in our mission, we have already changed the odds for 2 million students over 25 years, and we can look to impacting 2 million more in the years to come.

I am proud to serve as chair of the board during this transformative moment in Think Together's history as we scale our growth to provide even more students with enriching opportunities to achieve their greatness.

DAN YOUNG
Chair, Board of Directors



Table of Contents

08	Year in Review
11	What's Next?
12	Our Reach
14	Our Focus Areas
18	Student Story
21	Donor Stories
22	Corporate and Foundation Partners
23	Individual and Family Donors
26	Regional Leadership
27	Executive Team
28	Board of Directors
29	In Memoriam
30	Statement of Activities

A Year in Review

A Year of Growth

The past year has been a tremendous time of transformation for Think Together. Increased investments from the state to support Expanded Learning Opportunity Programs (ELO-P) continue to transcend our field in ways we have only before imagined. In 2023, we have seen more than 70% growth in revenue, which translates into more students served and at a deeper level. To meet the moment, Think Together has stepped up our leadership, infrastructure, and support of partners to ensure students receive the opportunities to succeed and thrive in their education journeys.



Think Staff

Think Together can only meet our mission to change the odds for kids with high-quality, well-trained staff. In 2022 in response to the nationwide staffing shortages, Think Together built a talent acquisition team, and over the past year we maximized and stabilized this vital part of our infrastructure. Think Together began the 2023 school year 94% staffed—a metric to celebrate. We also expanded our training capacity, improved our student registration platform, and strengthened our IT infrastructure.

Program Quality to Maximize Learning

The masks might be off, but the effects of COVID remain damaging to student learning and progress throughout our state. To support more learning, we enhanced our program design with an innovative, research-based curriculum to maximize the time students are with Think Together. Our program development team has created more than 4,000 new lessons, activities, and experiences for students of all age groups heading into the 2023-2024 school year.



College and Career: A Path for Success

Think Together’s college and career readiness programs are designed to empower students to dream big, set ambitious goals, and take the steps necessary to realize their potential. These programs provide guidance with college admissions, financial aid, and scholarship opportunities, ensuring that no student is left in the dark about higher education prospects. Yet, state and federal grants do not come close to meeting the demand or need. By partnering with community leaders like Bank of America, we introduced students to a wide array of career options, allowing them to make informed decisions about their future.

“Think Together has helped me become a better speaker because I was a timid kid. They taught me leadership skills and how to be outspoken or when to speak. They showed me numerous ways to improve myself for my public speaking and branch out to others when needed.”

—High school senior, Compton Unified School District



What's Next?

Think Together continues to look to the horizon to ensure we meet today's and tomorrow's important moments in education.



To meet the staffing needs of the state's school districts, we launched the **California Schools Talent Collaborative** to bring best-in-class staffing solutions to education. Led by former superintendent of San Bernardino City Unified School District, Dr. Dale Marsden, the Talent Collaborative is already creating partnerships to staff afterschool and high dosage tutoring programs to transition kids off of waiting lists and provide much-needed support.



Think Together recognizes the importance of creative outlets and physical activity to academic success. Through innovative pilot programs and partnerships made possible by the support of state and private grants, we have harnessed the potential of **arts, STEM activities, and sports** to enrich education and ignite the interests of the next generation.



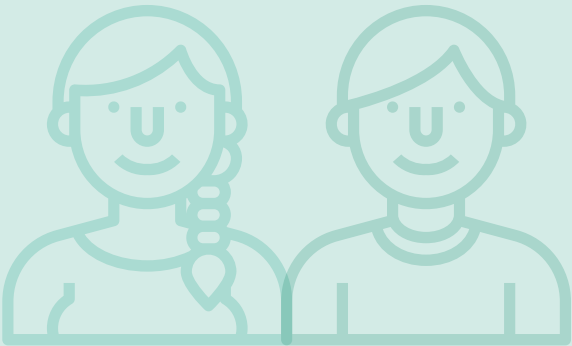
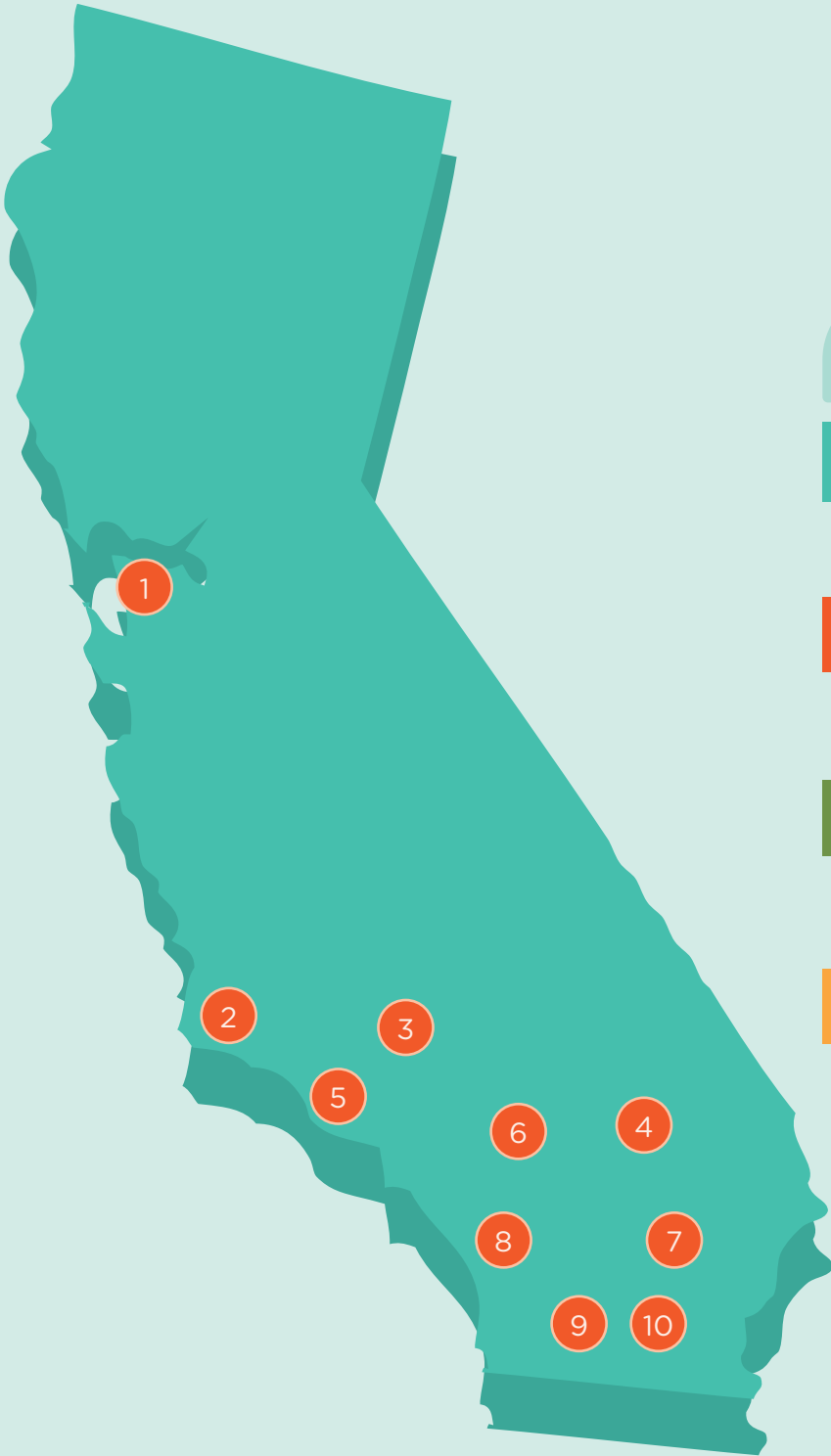
Think Together is the first expanded learning provider to partner with **AVID** to extend its nationally recognized learning practices from classroom to after school. Through this unique partnership, Think Together leaders are trained on AVID's proven college-readiness strategies at 80 existing AVID middle and high school sites.



To truly close the opportunity gap, we must start at the top with leadership. We continue to strengthen leadership coaching in education through our school improvement division, **Orenda Education**, and have been working with some of the most prominent leaders in our state to create new levels of support. Stay tuned!

As we continue to build and scale Think Together programs and partners, we always remain focused on our mission: to partner with schools to change the odds for kids. Whether operating one program serving 100 students or a growing statewide organization serving 200,000 or more, we never lose sight of who we are and why we do what we do.

Our Reach



199,408
STUDENTS

607
SCHOOL SITES

51
DISTRICT PARTNERS

23
CHARTER PARTNERS

Think Together’s mission is to partner with schools to change the odds for kids.

To fulfill our mission, Think Together has partnered with schools since 1997 to deliver high-quality education and enrichment programs to students throughout California. Our programs are designed to supplement students’ traditional school day, providing more opportunities for learning through early learning programs, before school, after school, summer, during breaks and more.

Our school-improvement division, Orenda Education, supports Think Together’s mission by providing teachers and school leadership with systems and tools to ensure every student, no matter their demographic or circumstance, receives the premium education they deserve.

- 1 **BAY AREA**
14,291 STUDENTS
5 DISTRICTS
- 2 **SANTA BARBARA COUNTY**
18,490 STUDENTS
2 DISTRICTS
- 3 **KERN COUNTY**
2,822 STUDENTS
1 DISTRICT
- 4 **SAN BERNARDINO COUNTY**
62,415 STUDENTS
8 DISTRICTS
- 5 **VENTURA COUNTY**
734 STUDENTS
1 DISTRICT
- 6 **LOS ANGELES COUNTY**
39,701 STUDENTS
16 DISTRICTS
22 CHARTERS
6 GENERAL CHILDCARE PARTNERS
- 7 **RIVERSIDE COUNTY**
36,505 STUDENTS
14 DISTRICTS

We are very pleased with the Think Together team members who have become a part of our Foothills community this year. Each day, they support student safety, helping students who require assistance at lunch, and building relationships with students. Their reliability, consistency, flexibility, and positive attitudes all contribute to the mission and vision of Foothills Middle School, and the Arcadia Unified School District.

—Administrator, Arcadia USD

- 8 **ORANGE COUNTY**
13,737 STUDENTS
2 DISTRICTS
1 CHARTER
15 GENERAL CHILDCARE PARTNERS
- 9 **SAN DIEGO COUNTY**
2,150 STUDENTS
1 DISTRICT
- 10 **IMPERIAL COUNTY**
8,563 STUDENTS
1 DISTRICT

Our Focus Areas



Early Learning Program

Think Together’s Early Learning Programs focus on our youngest learners to ensure they start their education journey off right. Through preschools, parent education, family engagement, and a new program that supports in-home daycare providers with early learning training, we’re making an impact with children from birth to 5-years-old.

- 21 General Childcare providers served 72 children
- 40 Parents enrolled in Parent Education Program

160
Students
Served

It has been such a good introduction for (my son) to get a head start in his schooling and even a little academics. Thank you so much for being his first teachers.

—Parent Education Program, Orange County

67,288
Students
Served



Expanded Learning

Think Together’s expanded learning programs operate daily around a student’s school day to provide the academic support and enrichment that they may not receive otherwise.

- Before and After School Programs for TK-8
- High School and Workforce Readiness Programs
- Summer Programs and Other Non-Instructional Days

Transitional Kindergarten-8th Grade

Think Together’s before and after school programs enrich education through academics, arts, sports, physical fitness, STEM activities, and much more. Leaders inspire students to learn more, build confidence, and find their passions.

Think Together staff is always nice, kind, and friendly. They help me fit in with other kids as well, and I do my homework fast and accurate!

—4th grade student, Alum Rock Union School District

Our Focus Areas



11,255
Students
Served

High School

High school afterschool programs are essential to the pivotal years that lead students into adulthood. Think Together high school programs provide enrichment, mentorship, and a safe space for teens at this critical age. Students engage in college continuum support; workforce readiness education program (WREP); student-led clubs, such as art, gardening, gaming, and dance; and life-skills workshops, including financial literacy, driver’s education, food handlers’ certification, and more.

- 94% of students said they know how to set goals for their future
- 93% of students have developed skills for their future career
- 93% of students want to learn more about the subjects they learned at Think Together

Through WREP, I received the support needed to discover my career aspirations and become a leader for my peers.

—High school student,
Azusa Unified School District



Think Summer

Additional funding this year allowed for more Think Summer students and experiences than ever before. Nine weeks of summer enrichment kept young minds learning and engaged during summer months. In 2023, students enjoyed over 200 field trips across 45 locations and a wide variety of on-site experiences.

In addition to Think Summer, school partners had the opportunity to offer Think Together programs during winter and spring breaks, totaling 30 additional days of expanded learning that benefited both students and their families.

23,300
Students
Served

- Field trips included:
- Aquarium of the Pacific
 - Dodger Stadium
 - Discovery Cube
 - San Diego Zoo
 - California Science Center
 - J. Paul Getty Museum

- Experiences included:
- Magic of Science Show
 - Forces and Motion
 - Sky Dome Planetarium
 - Reptile Show
 - Game Truck and Laser Tag
 - STEAM Activities Day

Think Summer is important because we provide students with opportunities they wouldn’t have if they were just sitting at home being bored; so for Think Summer they get to play, socialize, and we’re closing the achievement gap.

—Quality Assurance Coach,
Ontario-Montclair School District

Student Story

Meet Jacquese

During his time at Think Together, Jacquese, a senior at Compton High School, experienced something he had never dreamed of: learning to program and fly drones. This program, made possible through a grant from The Boeing Company, ignited an interest in Jacquese that will carry him into his future.

Jacquese plans to double major in mechanical engineering and computer science. He also wants to help his community by encouraging young people like him to be the best they can be and steer them toward pursuing higher education.

Jacquese highlighted the impact Think Together's workforce readiness education program (WREP) had on preparing him for college: "I've been introduced to so many opportunities when I completed the WREP program. It basically jump-starts you in a way that you can't do by yourself."



Our Focus Areas



113,679
Students
Impacted

School Improvement

Think Together’s school improvement division, Orenda Education, guides school and district leaders with an equity-driven, research-based approach that improves student outcomes and increases their chances of graduating high school college-ready. Orenda schools find their students have improved grade-level mastery, graduation rates, and the requirements needed to enter a four-year university.

142 Schools served

762 Educators attended five Summer Institutes

I feel like this created a more consistent expectation for our students across the different schools. It also provided a focus for my instruction.

—Participating educator from Orenda’s Summer Institute



Donor Stories



Partnerships with Purpose

Think Together’s success story lies in its ability to forge partnerships with a diverse set of stakeholders who share a common goal: to provide equitable access to high-quality educational opportunities for all students.

By joining forces with foundations, corporations, and individual donors, Think Together has not only expanded its reach but also diversified its resources. This synergy has resulted in innovative programs and initiatives that have touched the lives of countless young learners.

Boston Consulting Group, Inc. (BCG), provided Think Together with pro bono hours valued at almost \$3 million. BCG’s strategic counsel has been instrumental in helping chart a clear and sustainable path forward for enhancing our organizational infrastructure and innovating new initiatives.

Think Together’s work with the **W. M. Keck Foundation** culminated after two years of investing in the development of expanded learning programs for more than 10,000 K-12 students at more than 45 public charter schools in our Los Angeles Metro region. The \$200,000 two-year allocation allowed Think Together to integrate these programs into our existing infrastructure, while improving accounting and operations systems within the region.

Think Together’s “Coding For All” initiative aims to introduce coding to more than 400 schools in California. Only 13% of partner schools have the technology necessary for coding programs, and **Broadcom Inc.** has been a critical partner in answering this need, donating thousands of laptops to ensure students have access to coding education. The donation reflects Broadcom Inc.’s commitment to fostering a diverse talent pipeline and making a lasting impact on the communities they serve.

The Boeing Company continues its role as a dedicated partner for Think Together, contributing more than \$500,000 in support of STEM, coding, and robotics programs, which benefit more than 12,000 students in Los Angeles and Orange counties. Boeing’s commitment to education and creating opportunities for students has made a significant impact on young people’s lives, aligning with its mission to ensure all students have access to resources for success.

Corporate and Foundation Partners

VISIONARY
\$250,000 and above
Boston Consulting Group
LA84 Foundation
Silicon Valley Community Foundation

INNOVATOR
\$100,000–249,999
Broadcom Corporation
The Boeing Company
Kaiser Permanente
Ralph M. Parsons Foundation
W. M. Keck Foundation

PARTNER
\$50,000–99,999
Ahmanson Foundation
Au Energy
Camino Enterprises
Cisco
DevTo Support Foundation
The David and Lucile Packard Foundation
Target
Ueberroth Family Foundation
Worah Family Foundation

SUSTAINER
\$25,000–49,999
Anonymous
Bank of America Charitable Foundation
Dwight Stuart Youth Fund
Impact Through Golf Foundation
Majestic Realty Foundation
Pioneer Circuits
Ross Stores Inc.
Southern California Edison

State Farm Mutual Automobile Insurance Company
The Green Foundation

SUPPORTER
\$10,000–24,999
AO
Charles Abbott Associates, Inc.
Crevier Family Foundation
Croul Family Foundation
Deloitte
Diane C. Owen Family Foundation
DJM Capital
Frome Family Foundation
Golden State Foods Foundation
Los Angeles Dodgers Foundation
NASCAR Foundation
ORION Property Partners
Pacific Life Foundation
Roripaugh Family Foundation
Wayne and Jo Ann Moore Charitable Foundation

ADVOCATE
\$100–9,999
Ally Financial Inc.
Apple Inc
Assistance League of Tustin
Association of California School Administrators
BNY Mellon Wealth Management, Newport Beach
Brookfield Properties
City National Bank, Beverly Hills
Comerica Bank
Cummins Inc.
Edwards Lifesciences
Financial Reporting Specialists LLC
Great Public Schools Now

Greenberg Glusker LLP
Jill Promotions
Marsh & McLennan Insurance
Microsoft Corporation
National Charity League, Inc., Newport Chapter
Noble Street Advisors LLC
Nossaman LLP
Orange County Department of Education
PIMCO Foundation
Ready Office Furniture
Skillastics
Thagard Foundation
The David Salon
Trubify
University Synagogue
USI Insurance Services LLC

THINK GIVING CIRCLE

INNOVATOR
\$100,000–249,999
Sangeeth and Sindhu Peruri

PARTNER
\$50,000–99,999
Dale and Jill Hurd
Worah Family Foundation

SUSTAINER
\$25,000–49,999
Eric and Connie Boden
Courtney-Vincent Trust
Donnie Crevier

SUPPORTER
\$10,000–24,999
Mark and Emily Abbott
Dawn and Paul Behnke
Alan and Nancy Bernstein
Jay and Chris Carnahan
Mary Lynn and Bill Coffee
Dottie Feeney Household
French Family Foundation
Sanjiv and Geeta Grover
Hoelscher-Bell-Elliott Foundation
Lamb Family Foundation
D. John Miller Family Charitable Foundation
Don and Carrie Nikols
Trish O'Donnell
Vinay Prahbu and Tanya Chinniah
Steve and Casey Robertson

Leonard and Jessica Speiser
Andria and Peter Strelow

ADVOCATE
\$1,000–9,999
Adrian and Lisa Foley
Kathryn and Jon Allen
Steve Amick
Susan Anderson
Anonymous
Laura and Bobby Archuleta
Leona Aronoff-Sadacca
Don and Anita Barth
Randy and Mary Barth
Michel Bastien and Jennifer Christensen
Larry and Sue Ann Beaty
Jim and Judy Bergman
Mark Borman
Robin and Linda Boyd
Steve and Shelley Brown
Renee and Vito Canuso
Maynard and Sherri Carkhuff
Clark/Lewis Family Foundation
Linda and Chris Clark
Debra Corley
Dick and Kim Crawford
Rod and Nancy Daley
Michael Demyttenaere
Pawan Deshpande
Swarnjit and Renu Dhatt
Marc Douat
Noreen Dratch
Tia Dwyer and Scott Palacios
Khary and Andrea Espy
Adrian and Lisa Foley
Robert Friedman and Bonnie Levin Friedman

Jack and Anne Gallagher
Darlene A. & Walter B. Gerken Fund
Naren and Rashmi Goel
Ed and Cornelia Gould
Jeanne and Jay Hathotuwegama
Amy Hemseri-Sabala
Tracy and Randal Hernandez
Dave and Sue Howard
Mike and Pam Howard
Thomas and Janet Hryniewicki
Barbara Jampolis and Hank Rains
Kara Johnson
Donald and Linda Kelly
Steve Lathrop
Bobby and Terry Lee
John and Joyce Lee
Rachel Lee
Paolo and Candice Leon
Mike Lewis and Kathy Braun-Lewis
Bryan Ley
Livingston Family Foundation
Lillian Maldonado French
Janet Miedema
Moses/Lubash Family Fund
Frances Munoz
Barney Page and Lisa Dunivin Page
Manish and Shital Parikh
Ashish Patel and Neelam Goyal
Ted and Suzanne Paulson
Robert and Sheryl Perez
Sankara and Jyothi Peruri
Jim and Beverly Peters
Spencer Preis
Maria and Casey Reichel
Richardson Family Charitable Fund
Troy and Jeanie Roe
Pat McClure and Jonathan Sadai

Individual and Family Donors

Jonathan Schlichter
Cliff Schneider
Andy and Betsy Schutz
Mike and Marja Selna
Nambi and Kalyani Seshadri
Tim Shaheen
Gribin Simmons Foundation
Joan Slattery
Jason and Dimitra Stucke
Sat and Leanne Tamaribuchi
Bill and Patty Tamblyn
Summer Taylor and Alex Martinez
Bart and Deborah Thomsen
Bill Turpit and Rex Allen
Julie Vennewitz-Pierce and John Pierce
Jeff and Jodi Wahba
Marlene Washington
Scott and Mariette Wharton
Tod and Linda White
David and Susan Wood
Penny Wood
Michael and Julie Woronoff
Johnathan Wright and Amy Tupa
Lynda Zadra-Symes and Larry Zadra

**OTHER INDIVIDUAL/
FAMILY DONORS
\$100-999**

Lawrence Aldava
Anonymous
Whitney Applegate
Satish Arvapalli
Patty Ashen
Robin Avelar La Salle and David La Salle
Jim and Diane Bailey
Valerie Barber

David and Marseilla Barth
Brandy and Tommy Beadel
Linda and John Benner
Mona Bernstein
Regina Birdsell
Katrina Bischoff
Bobbi Blase
Nancy Block
Mark Boennighausen
Amy Borenstein and Jim Mortimer
Peter and Vera Borges
Rodger Bradfield
Anna Brown
Frank and Alexys Buckner
John and Heidi Buffington
Christine Bui
Leo Burns and Dickey Connolley
Michael Burton
Ann Cadavona
John and Barbara Campbell
Cade Cherry
Stephanie Chiavatti
Katherine and Richard Clancey
Lee and Jay Clancey
Don and Debra Connor
Dave and Pattie Cortese
Susan and Donald Costa
Kimberly Cruz
Christopher Culbertson
Bobbi and Jerry Dauderman
Shernaz Daver
Mary Ann Dewan
Gay Dorsey and Mike Poppoff
Gerard and Sandra Drummond
Jim and Lisa Eddy
Ashkan and Ariana Entesari
Sean Fabian
Josh Felix
Sharon Ferguson and Robin Rightmire
David Fine
Justin Finemel

Beth Flanigan
Kelly Flickinger
Natalia Flores
Mark Franciose and Marissa Levendis
Kathie Frobenius
Mari and Stan Frome
John and Renee Gabbard
Stewart and Clara Gandolf
Angie Germano
Steve and Lynn Goldstein
Rich Gordon and Denny McShane
Barbara and Dale Grant
Linda Griffith
Daniel Guggenheim
Bruce Haas and Cynthia Woelfel
Joseph and LeeAnn Haney
Wynter Hart
Andrew Hartzell
Matthew and Chris Healy
Dave Herman and Diana King
James Hodges
Blythe Holden
Daniel and Bridget Hopkins
Tammy and Tom Hunt
Fran and Ron Inman
Wayne and Shannon Inouye
Ann and Lance Jensen
Bryan Johnson
Sonya Johnson
Hiram Kellogg
Shannon Kline
Joscha Koepke and Hannah Rosenstein
Valerie and David Kos
Suku Krishnaraj Chettiar and Namrita Chettiar
Lee and Maria Kunz
Josh Lauman
Pamela and Steven Lazarr
Jared Lazarus
Linda and Lawrence Lee

Elaine and Jean Legere
Mark Lempert
Michael and Judy Leon
Stan Levy
Sam Liccardo and Jessica Garcia-Kohl
Janice Lin
Johanna Lizarraga
Robert Lubanski
Colleen Manchester
Michael Markel
Chebon Marshall
Will and Kate Marts
Linda McMahan Campbell
Bruce and Joan May
Kathy McGinnis
Brian and Adie McPartland
David and Kelly McQuaid
Jill McWhertor
Barry and Laurie Meister
David and Amy Messinger
Teresa Mittman
Thaddeus and Sandra Montgomery
Nadiah Mshasha
Chris and Carolyn Mukai
Mai, Binh and Brandon Nguyen
Derek Ntambakwa
Eric and Bitta Ntambakwa
Dean and Dani O'Dell
Snorri Ogata and Juliet Coscia
Yukiko Okada
Vickie Oshima
Mary Helen Padilla
Patricia Park
Lucy Patterson
Phillip Pérez
Holly Perry and Frank Germano
John and Kristi Pippas
Terrance Purdy
Nicolle Quintero
Curtis and Connie Rach
Tim and Sarah Randall

Hussain and Sakina Rangwala
Philip Recht
LeeAnn Reed
Lois Richmond
Thomas and Elissa Rogers
Charlie Rose
Andrew and Judy Roth
Katie and David Roth
Ben Rubin
Jeff Rush
Donna Rycroft
Hughes Schmidhauser Family Fund
Jim and Colette Scott
Carl and Connie Selin
Evelyn and Mark Serrano
Keyuri Shah
David Shenassa
John and Mary Ellen Simon
Monika and Amit Singh
Sirney Family Trust
Christopher Smith
Gretchen Smith
Kenneth and Yvonne Smith
Barrett Snider
Natalie Sollock
Jose Solorio
David and Shelly Soorholtz

Tom and Christine Spinogatti
Tara Sreekrishnan
Mike and Gloria Sullivan
Betsy and David Summers
Min and Esther Tak
Mark Taylor
Summer Taylor and Alex Martinez
Lisa and Mark Telles
Peter and Mary Tennyson
Jeralyn Terry and Nathan and Iris Stuart
SJ and Thorsten Timmermans
Sheryl and Ralph Tobelmann
Tommy Brewer II
Chuck and Lynn Tozzer
Jay and Karen Umphrey
Liz Utley
Melissa Vazquez
Eileen Virga
Barbara Wachsmann
Tyler Washington
Maggie West
Michael West
Mary Westbrook
Cam and Suzanne Woods
Douglas and Gretchen Wride
Brian Yamamoto and Tomomi Nagata



Regional Leadership



MALLORY BAQUERO
General Manager
L.A. Metro Region

ALBERTO BARAJAS
General Manager
West San Bernardino Region

JESSE DURKIN
General Manager
Santa Fe Springs Region

EDDIE GARCIA
General Manager
Orange County Region

LESLEY MARTIN
General Manager
Southeast L.A. Region

SAMIRA MEJIA
General Manager
South West Riverside and
San Gabriel Valley Regions

HARLYN SANTOS
General Manager
North East Riverside Region

RHONDA SCOTT
General Manager
North East San Bernardino Region

LISA TABAREZ
General Manager
Palm Springs Region

RICHARD TRAN
General Manager
Bay Area Region

Executive Leadership

RANDY BARTH
Founder & CEO

TIA DWYER
Chief Operating Officer

MARIA REICHEL
Chief of Growth Strategy

AMY HEMSERI-SABALA
Chief Financial Officer

JOSHUA FELIX
Chief People Officer

DAVE CUMMINGS
Chief Digital Officer

MELISSA CRAWFORD
Chief of Staff to the COO

KECIA BAILEY ALEXANDER
Deputy Chief of Human Capital

TOMMY E. BREWER, II
Deputy Chief of Innovation and Partnerships

NATALIA FLORES
Deputy Chief of Programs and Operations

STEVE AMICK
Executive Director of Policy and Partnerships

KATIE ROTH
Executive Director of Philanthropy

STACY GALDAMEZ
Executive General Manager

JACQUELINE LICARDIE
Executive General Manager

JOHANNA LIZARRAGA
Executive General Manager

SUSAN METCALF
Executive General Manager

ROSA LOPEZ
Executive Director of Early Learning Programs

ORENDA EDUCATION

DR. ROBIN AVELAR LA SALLE
Founder & President

MARTY MAYA
Chief of Staff

PAYEL CHATTERJEE
Software and Technology

JANET HWANG
Quality

SCOTT MCGUIRE
Leadership and Instruction

SARAH MOTT GONZALES
College and Career Readiness

JEANETTE SALINAS
Leadership and Instruction

GENNY SOSA
Educational Partnerships

Board of Directors

In Memoriam

QUINCY ALLEN
Co-Founder & Managing Partner
Arc Capital Partners

RANDY BARTH
Founder & CEO
Think Together

DAWN BEHNKE
Executive VP
Pacific Life Insurance

ERIC BODEN
Philanthropist

VICTOR CHIANG
Start-up Advisor/Investor
Silicon Valley

MARY LYNN COFFEE
Sr. Environmental Partner
Nossaman Law, LLP

DANIEL FRIEDMAN
Managing Director & Senior Partner
Boston Consulting Group

TRACY HERNANDEZ
CEO
BizFed

DALE HURD
Retired EVP/CFO
All-Tex Pipe & Supply, Inc

FRAN INMAN
Senior VP
Majestic Realty Co.

JOHN LEE
Executive VP
PIMCO

PAOLO LEON
Principal
AO

LILLIAN MALDONADO FRENCH
Ed.D. Retired Superintendent

D. JOHN MILLER
Founder & CEO
DJM Capital Partners, Inc.

JULIE MILLER-PHIPPS
Co-Owner and Principal Consultant
Collaborative Innovation Partners

SANGEETH PERURI
Chief Strategy Officer
PDI

VINAY PRABHU
Global Co-Head of Consumer
and Retail
Jefferies Investment Bank

STEVEN ROBERTSON
CFO
HDMI Licensing Administrator, Inc.

LEONARD SPEISER
Entrepreneur
Silicon Valley

BILL TAMBLYN
Financial Consultant

SUMMER TAYLOR
Managing Director
Deloitte

JULIE VENNEWITZ-PIERCE
Director, Corporate Social
Responsability
Ross Stores, Inc.

MARLENE WASHINGTON
Head of Sales, North America
Thermo Fisher Scientific

ANU WORAH
Owner and Director
Rebalance Physical Therapy

DAN YOUNG
BOARD CHAIR
President
Camino Enterprises



On July 15, 2023, we lost a leader, colleague, and friend, **Mike Frobenius**.

Mike joined Think Together in 2007 as Chief Financial Officer. During his tenure, he led not only the finance team, but also IT, risk management, facilities, and production. In 2013, Mike was honored by the Orange County Business Journal with CFO of the Year. Mike was an integral part of the executive team and made key decisions that helped Think Together grow to serving over 200,000 students throughout California today.

Mike led with purpose, empathy, and kindness. He was an influential leader, and those who had the good fortune to work with him were better for it.

Statement of Activities

For fiscal year ending on June 30, 2023.

REVENUES

EXPANDED LEARNING (A,B)	175,603,899
EARLY LEARNING (A)	1,972,711
SCHOOL IMPROVEMENT (A)	7,426,580
OTHER	2,773,809
TOTAL REVENUES	187,777,000

EXPENSES

PROGRAM SERVICES	
EXPANDED LEARNING (B)	159,341,274
EARLY LEARNING	1,856,296
SCHOOL IMPROVEMENT	9,645,345
TOTAL PROGRAM SERVICES	170,842,915

FUNDRAISING	1,692,582
GENERAL & ADMINISTRATIVE	13,581,112
TOTAL EXPENSES	186,116,609

NET INCOME	1,660,392
-------------------	------------------

ENDING NET ASSETS	14,327,293
--------------------------	-------------------

(A) Includes allocated portions of \$4.6m total combined philanthropic support received during the fiscal year.
(B) Includes recognition of \$17.6m In-Kind program services, such as facility, snack costs, and administrative costs contributed by school district partners.





2101 EAST FOURTH STREET, SUITE 200B | SANTA ANA, CA 92705